

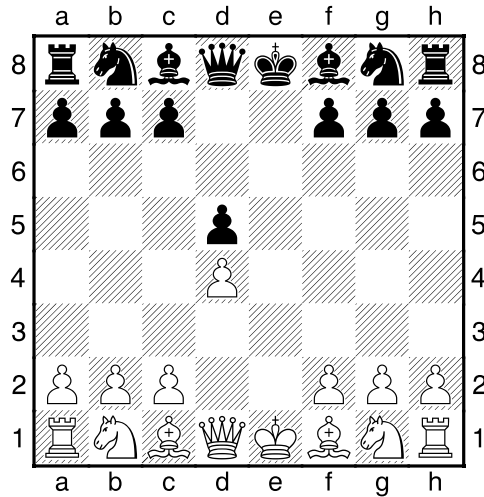
Chapter 4

French defense, Exchange variation

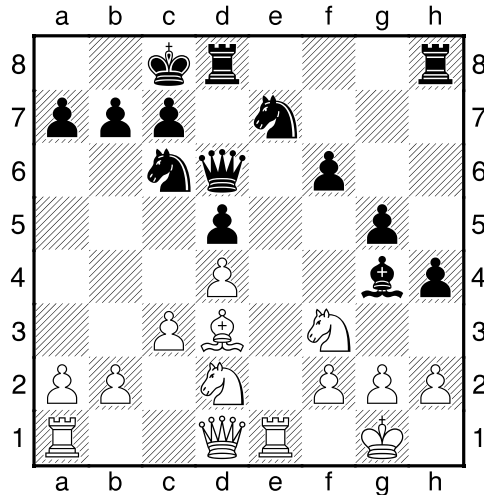
Karel Opocensky - Alexander Alekhine

Paris, 1925

1.e4 e6 2.d4 d5 3.exd5 exd5



4.Nf3 Bd6 5.Bd3 Bg4 6.0-0 Ne7 7.Bg5 f6 8.Bh4 Nbc6 9.c3 h5 10.Nbd2 g5 11.Bg3 h4 12.Bxd6 Qxd6 13.Re1 0-0-0



14.b4 Rde8 15.Qc2 Qf4 16.Re2 Bxf3 17.Nxf3 h3 18.Qc1 Qg4 19.Qf1 Nf5 20.Rae1 Rxe2 21.Bxf5+ Qxf5 22.Qxe2 Nd8 23.g3 a6 24.a4 Kb8 25.Kh1 Re8 0-1

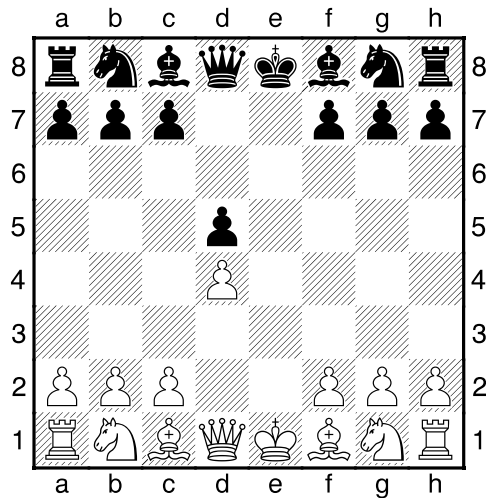
Bh7 sacrifices

1.e4 e6 2.d4 d5 3.exd5 exd5 4.Bd3 Bd6 5.Nf3 Ne7 6.0-0 0-0 Another trap to be familiar with is **6...Bg4 7.Nbd2 0-0? 8.Bxh7+! Kxh7 9.Ng5+ 7...Nbc6** is the correct way.

And now **7.Bxh7+?** is an error, as after **7...Kxh7 8.Ng5+ Kg8 9.Qh5** Black can simply defend with **9...Bf5**.

Exchange variation with 4.c4

1.e4 e6 2.d4 d5 3.exd5 exd5



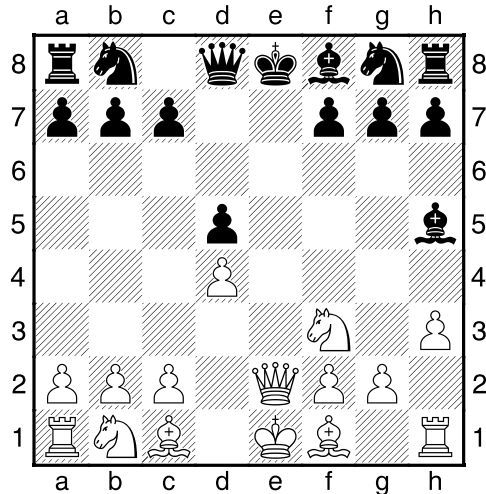
4.c4 Nf6 5.Nc3 If **5.c5 b6 6.cxb6 (Or 6.b4 a5 7.bxa5 (or 7.a3 axb4) 7...bxc5) 6...axb6 7.Nf3 Bd6 8.Bd3 0-0 9.0-0 c5**.

5...Be7 Or **5...Bb4**.

6.Nf3 0-0 7.Be2 dxc4 8.Bxc4 Bg4 9.Be3 Nc6 10.0-0 Qd6 11.Re1 Rad8.

Exchange variation 4.Nf3 Bg4

1.e4 e6 2.d4 d5 3.exd5 exd5 4.Nf3 Bg4 5.h3 Bh5 6.Qe2+!



6...Qe7 If 6...Be7 7.Qb5+ Nc6 8.Qxb7 Nb4 9.Bb5+ Kf8 10.Ne5 Nxc2+ (10...Nf6 11.Nc6) 11.Kd2 Nxa1 12.Nd7+ Ke8 13.Re1.

7.Be3 Nc6 8.Nc3 0-0-0 8...Bxf3 9.Qxf3 Nxd4 10.Qd1 c5 11.Nxd5 Qe5 12.c3 Qxd5 13.Bb5+.

9.g4 Bg6 10.0-0-0 f6 10...Nf6 11.Ne5 Nxe5 12.dxe5 Qxe5? 13.f4 followed by f4-f5.

11.a3 Qd7 12.Nd2 Kasparov-Short, Tilburg 1991.

Exchange variation 4.Nf3 Nc6

1.e4 e6 2.d4 d5 3.exd5 exd5 4.Nf3 Nc6! 5.Bb5 If 5.h3 Bf5

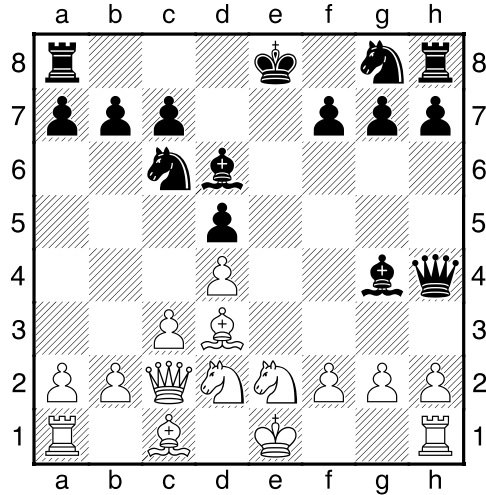
5...Bd6 6.0-0 6.c4 dxc4 7.d5 a6 8.Ba4 b5 9.dxc6 bxa4 10.0-0 Ne7 11.Qxa4 0-0 12.Qxc4 Be6 13.Qc2 Bf5 14.Qc4 Bd3 or 6.Ne5 Nge7.

6...Nge7.

William Winter - Alexander Alekhine

Nottingham, 1936

1.d4 e6 2.e4 d5 3.exd5 exd5 4.Bd3 Nc6 5.Ne2 Bd6 6.c3 Qh4 7.Nd2 Bg4 8.Qc2



8...0-0-0 9.Nf1 g6 10.Be3 Nge7 11.0-0-0 Bf5 12.Nfg3 Bxd3 13.Qxd3 h6 14.f4 Qg4 15.h3 Qd7 16.Rhf1 h5 17.Ng1 h4 18.N3e2 Nf5 19.Nf3 f6 20.Nh2 Rde8 21.Bd2 Re6 22.Ng4 Rhe8 23.Rde1 R8e7 24.Kd1 Qe8 25.Qf3 Na5 26.b3 Nc4 27.Bc1 If 27.bxc4 Qa4+ 28.Kc1 Ba3+ 29.Kb1 Rb6+ 30.Ka1 Bb2+ 31.Kb1 Bxc3+.

27...Nce3+ 28.Bxe3 Nxe3+ 29.Nxe3 Rxe3 30.Qf2 Qb5 31.Nc1 Rxc3 32.Rxe7 Bxe7 33.Qe1 Kd7 34.f5 Re3 35.Qf2 g5 36.Re1 Re4 37.Rxe4 dxe4 38.Kd2 Bd6 39.Kc2 Bf4 0-1