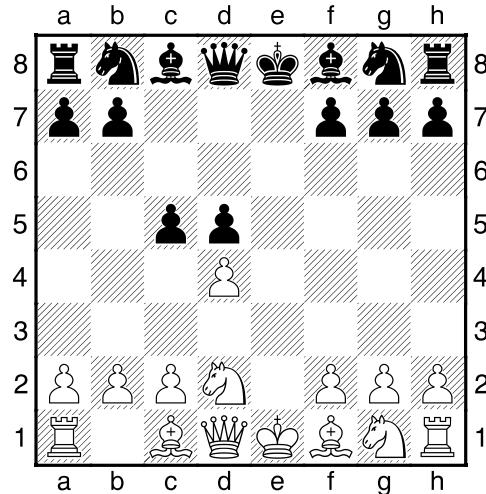


## Tarrach 3.Nd2 c5 4.exd5 exd5

1.e4 e6 2.d4 d5 3.Nd2 c5 4.exd5 exd5

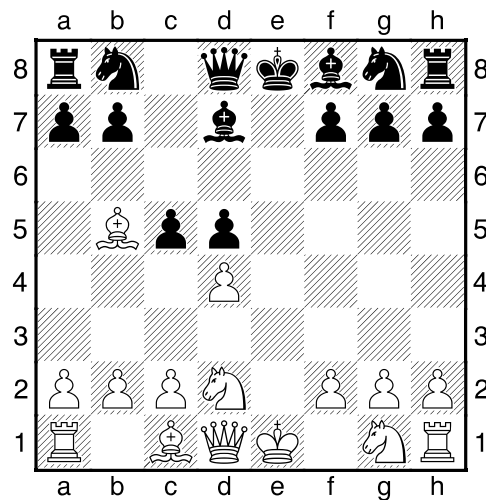


### 5.Bb5+

5.Ngf3 Nf6 (5...Nc6 is the old main line, 6.Bb5 Bd6 7.dxc5 Bxc5 8.0-0 Nge7 9.Nb3 Bd6 as played in numerous of the Karpov-Korchnoi matches 1974-1981. 10.Bg5 0-0 11.Re1 Bg4 12.Bh4 Re8 13.Bg3 Bxg3 14.hxg3 Qb6 15.a4)

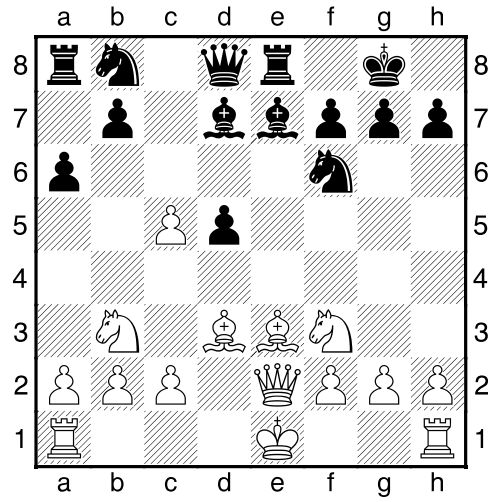
6.Bb5+ Bd7 7.Bxd7+ Nbx7 8.0-0 Be7 9.dxc5 Nxc5 10.Nb3 Nce4 11.Nfd4 Qd7 12.Qf3 0-0 13.Nf5 Bd8 14.Be3 Rc8 15.c3 g6 16.Ng3 Re8 17.Rfe1 a5 18.a4 b5 Blehm-Gurevich, 1998.

### 5...Bd7



6.Qe2+ Be7 7.dxc5 Nf6 8.Nb3 0-0 9.Be3 Re8 10.Nf3 a6 11.Bd3

11.Bxd7 Nbx d7



**11...Ba4 12.Nfd4 Nbd7 13.0-0-0 Bxb3 14.Nxb3 Nxc5 15.Qf3** and now Black has three reasonable choices:

- a) **15...Nxb3+** 16.axb3 Qa5 17.Kb1 Bc5
- b) **15...Nxd3+** 16.Rxd3 a5 17.Nd4 a4 18.a3 Nd7 19.Bf4 (*19.Qxd5? Nc5*) 19...Nc5
- c) **15...Na4**